



# THE ULTIMATE FASTENERS

## STAINLESS STEEL

## CABINETS & MORE

# AURA™

## STAINLESS STEEL



### Aesthetic Design Mushroom Head

The aesthetic head design is shaped to compliment a clean finish in cabinetry, furniture, and more. The head is bold to show its architectural shape and decorates visible surfaces.



### Graduated Shoulder

The bigger head increases holding power on the wood, while the graduated shoulder from head to shank ensures maximum strength for the fastener head.



### Fast Start Tip

Our sharp tip grips quickly into the wood providing fast work and easy installation.

The advanced Cabinetry (& more!) Wood Screw for typical very high-corrosive environments. Use them on any size job or project.



Available in 1lb, 5lb and 1/4 Keg  
All Packaging Includes Drive Bit!

**WWW.SCREW-PRODUCTS.COM**

Gig Harbor, WA 98332  
Toll-Free 1-877-844-8880

Weights and counts subject to change without notice.

**THE ULTIMATE FASTENERS**

FOLLOW US



#SCREWPRODUCTSINC

Nov 15, 2020

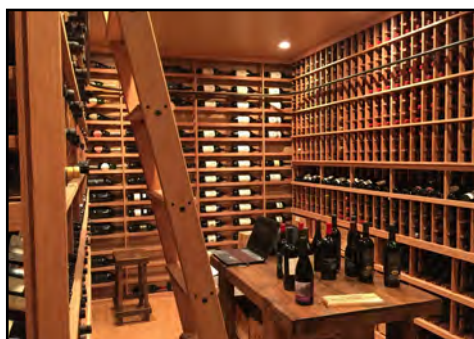


# THE ULTIMATE FASTENERS

## STAINLESS STEEL

## CABINETS & MORE

The AURA™ screw features an aesthetic design of the mushroom head shaped to fit in cabinetry, furniture and more. The large diameter head of the fastener ensures increased holding power. Our sharp tip grips quickly into the wood providing fast work and easy installation.



Sizes Available: #10 x 1" to #10 x 2-1/2"

General Info	
Type of Screw	General Purpose Wood
Material	Stainless Steel <sup>1</sup>
Head Style	Mushroom TX20 Star Drive
Point Type	Type A
1. Our Gen II Products marked "Stainless Steel" are Austenitic Stainless Steel AISI 305 or better!	



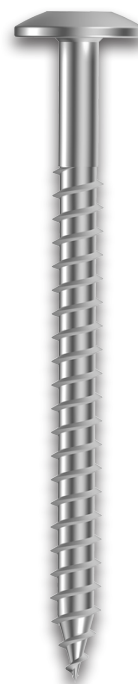
### TOUGH ENVIRONMENTS

**Stainless Steel:** Outdoor Coastal areas, surfaces with salt exposure, ground contact treated lumber, shipyards, medium polluted industrial areas, chemical plants, etc. Always follow timber manufacturer's recommendations for fasteners.

### Common Applications

- General indoor and outdoor jobs and projects
- Cabinetry
- Furniture manufacturing
- Windows and doors
- Remodeling and repair
- Residential construction
- And Much more!

Construction		#10
Head diameter (inch)		0.476
Minor thread diameter		0.134
Major thread diameter		0.207
Shaft diameter		0.148
Drive Size		TX20
Product Range		Approx Count per 1lb
Length	Thread	#10
1"	3/4"	136
1-1/2"	1"	99
2-1/2"	1-1/2"	71



**WWW.SCREW-PRODUCTS.COM**

Gig Harbor, WA 98332  
Toll-Free 1-877-844-8880

Weights and counts subject to change without notice.

**THE ULTIMATE FASTENERS**

FOLLOW US



#SCREWPRODUCTSINC

Nov 15, 2020